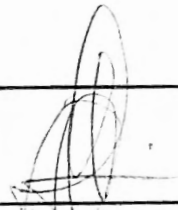




ELIZADE UNIVERSITY
FACULTY OF ENGINEERING
DEPARTMENT OF CIVIL ENGINEERING
2015/2016 ACADEMIC SESSION
SECOND SEMESTER EXAMINATION (JULY, 2016)

COURSE CODE:
COURSE TITLE:
DURATION:

CVE 314
ELEMENTS OF ARCHITECTURE
3 HOURS


HOD'S SIGNATURE

INSTRUCTION

1. ANSWER QUESTION 1 AND ANY THREE QUESTIONS ONLY.
2. SEVERE PENALTIES APPLY FOR MISCONDUCT, CHEATING, POSSESSION OF UNAUTHORIZED MATERIALS DURING EXAM
3. YOU ARE NOT ALLOWED TO BORROW CALCULATORS AND ANY OTHER WRITING/DRAWING MATERIALS

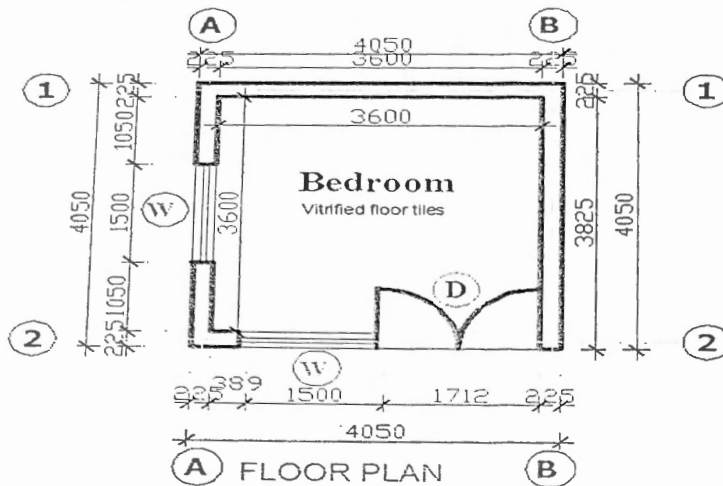
ELIZADE UNIVERSITY
FACULTY OF ENGINEERING
DEPARTMENT OF CIVIL ENGINEERING
SECOND SEMESTER EXAMINATION 2015/2016 SESSION
CVE 314 – ELEMENTS OF ARCHITECTURE **DATE: JULY, 2016**
TIME ALLOWED: 3HOURS
INSTRUCTIONS: Answer QUESTION 1 and ANY THREE questions

QUESTION 1

(40 Marks)

With the aid of AutoCAD software, draw the following for a bedroom bungalow for Elizade University staff quarters as shown below.

- i. Floor plan
- ii. Elevations



QUESTION 2

(20 Marks)

- i. According to ARCON (Architects Registration Council of Nigeria), define architecture
 - ii. List and explain primary elements of architecture
- i. What is a form in architecture?
 - ii. Forms are categorized into regular and irregular forms, explain them

QUESTION 3

(20 Marks)

- (a) What are properties of forms?
- (b) i. What is proportion in architecture?
- ii. List types proportion
- (c) List the components of an architectural working drawing

QUESTION 4

(20 Marks)

- (a) i. What is scale? Define types of scale

- ii. To what scales should the following be drawn; Site plan, floor plan, roof plan, elevations, sections and details
- (b) i. List and state the dimensions of drawing paper sizes
- ii. How can a paper size be generated from a bigger paper size?
- (c) Define lettering and unit in architecture

QUESTION 5

- (a) List line thicknesses for drawing presentation of the following features (20 Marks)
 - i. Dimension line and Center line
 - ii. Windows and Doors
 - iii. Walls
- (b) Sketch the architectural representation of the following elements
 - i. Doors
 - ii. Windows
 - iii. Dampproof Course (D.P.C.)
 - iv. Block Walls v. Hardcore
- (c) State the standard sizes of the elements listed in question 5c i., ii., iii.